



FLEXISTAX D0950 CUSTOM DC-DC POWER SUPPLY 950W

Outline Product Specification

FEATURES

- ❑ **Rapid solution for unique DC-DC power applications.**
- ❑ **Versatile design meets wide range of input and output requirements.**
- ❑ **Step-up and Step-down dc-dc conversion**
- ❑ **Up to 950W of output power**
- ❑ **Wide Input Range 11 - 75Vdc**
- ❑ **12 - 48Vdc standard output voltages**
- ❑ **High Efficiency - System typ 86%**
- ❑ **Reduced system heat dissipation**
- ❑ **No forced air cooling required**
- ❑ **Comprehensive protection features**
- ❑ **Low profile 24.8mm**
- ❑ **Low NRE for custom units**
- ❑ **Reduced Time to Market**

The Flexistax D0950 is a 950W DC-DC power conversion module developed specifically for applications where standard off-the-shelf solutions do not exist. Helping to reduce their time-to-market, lessen capital investment and minimise the risk often associated with the outsourcing of their unique power supply requirements.

In a highly efficient arrangement, two of Powerstax's versatile F501 full brick DC-DC converters of 500W are coupled with a custom 2 phase boost (buck) converter to present a complete bespoke solution.

High system efficiency provides a lower level of heat dissipation which allows the complete open construction unit to be cold wall mounted with no forced air cooling required.

The Flexistax D0950 is ideal for use in vehicle mounted applications, the telecoms, automotive and industrial markets.



NB: This is an outline specification only. The Flexistax product is designed to meet very wide requirements. Please contact Powerstax for full specification of your exact application



Example Specification

Mechanical Outline

Input characteristics

Supply voltage 11-36Vdc (boost)
 or 36-75V (buck)

Supply current up to 102A_{dc} for low range
 recommended breaker rating
 120A_{dc} up to 32A_{dc} for high
 range recommended breaker
 rating 40A_{dc}

Output characteristics

Output voltage 12, 15, 24, 28 or 48Vdc single
 output

Setting tolerance +/-2%

Output current 75, 60, 39, 34 or 20A_{dc}

Overcurrent protection electronic limiting

Output power 950W continuous

Efficiency Overall typically 90%

Output ripple less than 2% p-p

Safety

The equipment is CE marked for compliance with the LVD
 (can't remember the numbers)

It complies with the requirements of EN60950.

Earthing

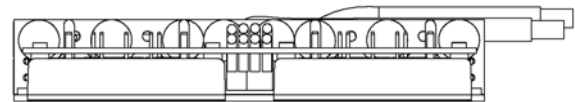
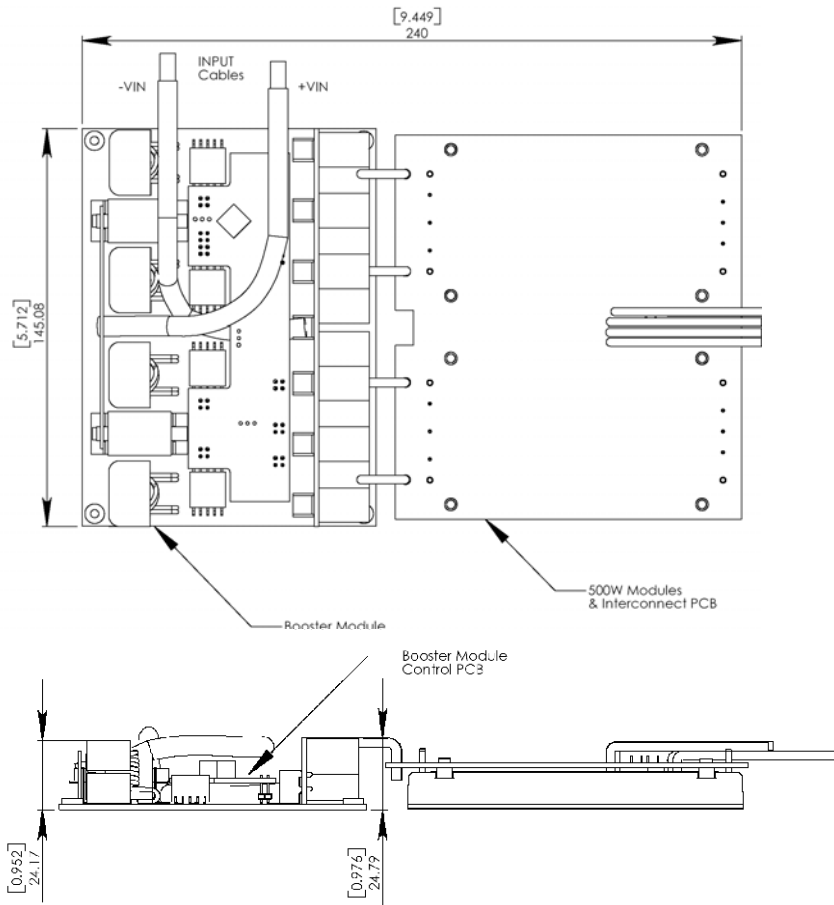
Baseplates to be grounded

Voltage proof

Input to ground	2200Vdc
Input to output/ground	2200Vdc
Output to ground	500Vac

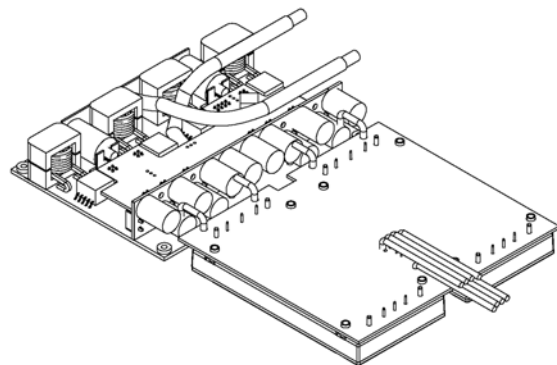
Construction

Conduction cooled via baseplate with operating tempera-
 ture range of -25degC to +85degC.



Above drawings shows example of typical specification
 - other configurations upon request

Optional 3mm thick mounting plate (270mm x 160mm - as shown in
 phot overleaf) can be supplied



Exceeding absolute maximum ratings may cause permanent damage and may reduce reliability. Information and specifications contained in this data sheet are believed to be correct at the time of publication. However, Powerstax accept no responsibility for consequences arising from printing errors or inaccuracies. Specifications are subject to change without notice.